



total access control

# ACCESS CONTROL

DKML MAGNETIC LOCKS

Upswung.com

## features

- Superior reliability, strength and safety
- Fast and easy installation
- No residual magnetism
- Fail-safe operation assures that fire exit paths are unlocked during power outages
- MOV surge protection protects locks from transient voltage spikes
- No moving parts to wear out or break assures a long life cycle
- LED (R/G) lock status indicates if the lock is secured (green) or not secured (red)
- Built in time delay eliminates the need for costly add-on exit delay timers



total access control

**THE DKML SERIES** of magnetic locks offers a wide range of high quality electro-magnetic locks and brackets to accommodate most of your access control door locking requirements. Most locks are available in both surface and mortise mounts and can be ordered with special options such as LED lock status indicators and a built-in timer for automatic lock reactivation after a preset time.

## TECH SPECS

### models

1200lb (force) Locks:  
dkml-S12 surface mount  
single or dual doors  
available with LED/Relay status, Delay timer

600lb (force) Locks:  
dkml-S6 surface mount  
single or dual doors  
available with LED/Relay status, Delay timer

600lb (force) Locks:  
dkml-M6 mortise mount  
single doors only  
available with LED/Relay status, Delay timer

300lb (force) Locks:  
dkml-S3 surface mount  
dkml-M3 mortise mount

2000lb (force) Shear Lock:  
dksl-M20 mortise mount only  
LED status and Relay contact

### electrical

all models: 12 or 24 VDC field selectable  
dkml-S12, dkml-S6: 500 ma@12v, 250 ma@24v  
dkml-M6: 480 ma@12v, 240 ma@24v  
dkml-S3, dkml-M3: 360 ma@12v, 180 ma@24v  
dksl-M20: start: 1000 ma@12v, 600 ma@24v  
hold: 500 ma@12v, 300 ma@24v

Relay contacts all locks:  
30-Volt AC/DC, 500 ma maximum

### size

dkml-S12 single: 10<sup>1</sup>/<sub>2</sub> x 2<sup>7</sup>/<sub>8</sub> x 1<sup>9</sup>/<sub>16</sub>  
dual: 21 x 2<sup>7</sup>/<sub>8</sub> x 1<sup>9</sup>/<sub>16</sub>  
dkml-S6 single: 9<sup>7</sup>/<sub>8</sub> x 1<sup>7</sup>/<sub>8</sub> x 1<sup>1</sup>/<sub>32</sub>  
dual: 19<sup>11</sup>/<sub>16</sub> x 1<sup>7</sup>/<sub>8</sub> x 1<sup>1</sup>/<sub>32</sub>  
dkml-M6: 9 x 1<sup>1</sup>/<sub>2</sub> x 1<sup>1</sup>/<sub>16</sub>  
dkml-S3: 6<sup>1</sup>/<sub>2</sub> x 1<sup>3</sup>/<sub>8</sub> x 1<sup>3</sup>/<sub>16</sub>  
dkml-M3: 7<sup>31</sup>/<sub>32</sub> x 1<sup>3</sup>/<sub>8</sub> x 1<sup>3</sup>/<sub>16</sub>  
dksl-M20: 10<sup>5</sup>/<sub>8</sub> x 1<sup>3</sup>/<sub>8</sub> x 1<sup>1</sup>/<sub>4</sub>

### weight

dkml-S12-single: 10<sup>1</sup>/<sub>2</sub> lbs.  
dual: 20 lbs.  
dkml-S6-single: 4<sup>1</sup>/<sub>2</sub> lbs.  
dual: 9 lbs.  
dkml-M6: 4<sup>1</sup>/<sub>2</sub> lbs.  
dkml-S3: 2.6 lbs.  
dkml-M3: 2.6 lbs.  
dksl-M20: 4.6 lbs.

Warranty: 5 year limited factory warranty

### 300 to 1200lbs of Holding Force

Magnetic locks are popular because of the superior reliability, security, safety and ease of installation that they offer.



### fail safe

when wired with fire alarms, magnetic locks immediately release the door that they are securing, assuring that fire exit paths are open



### vandal resistant

Electromagnetic locks are vandal resistant making them ideal for practically any application



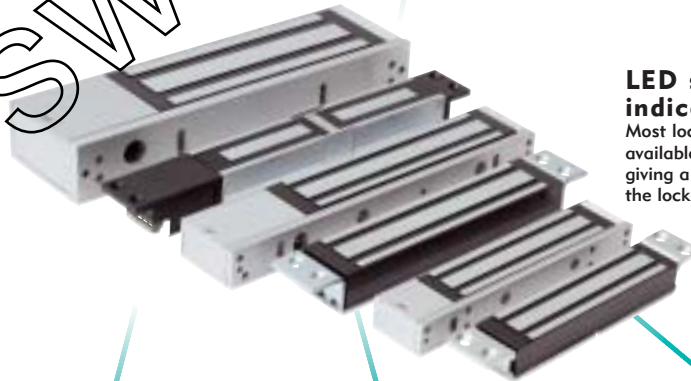
### magnetic locks have no moving parts

to wear out or break which assures a locking device with an extremely long life cycle



### LED status indicator

Most locks are available with an LED status indicator giving a visual indication as to whether the lock is secured or not



### door controls

a full range of exit buttons and door control devices provide easy exit capability.



### shear locks

provide both a magnetic and mechanical connection to assure superior locking performance.



### quick release pop button

assures instant release when power to lock is removed

