



# 1816 MULTI-LINE TELEPHONE INTERCOM SYSTEM



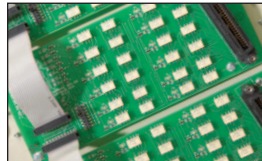
**doorman telephone**  
inputs for high-rise apartment buildings, plus programmable directory codes



**control access**  
with a simple push of a button on your touch-tone telephone



**no central office**  
necessary - just plug a touch-tone telephone into the phone jack in your apartment



**capacity**  
of the system is easily expanded with additional line interface boards

- Ideal for apartment buildings, college resident halls and office buildings
- Tenants do not need central office phone service to be connected. Use a touch-tone telephone plugged into the wall jack for instant connection
- Guest are identified by voice communication via the telephone
- Access is granted by pressing "9" on the touch tone telephone, or access can be denied by simply hanging up
- System can accommodate up to 1200 tenants. No reprogramming of the system is required when one tenant moves out and another moves in
- Special inputs for "doorman" telephone plus programmable directory codes
- Built-in call waiting assures that incoming or visitor calls are not missed. Unique double-ring identifies calls from the lobby panel. Regular incoming calls use the standard single ring

FEATURES

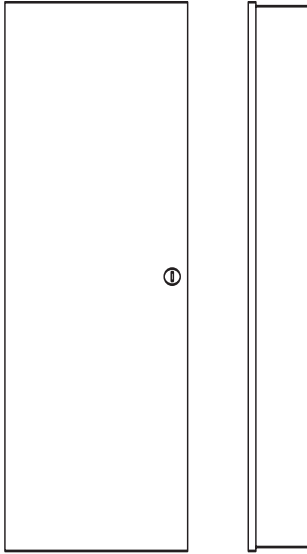
## ACCESS CONTROL SOLUTIONS



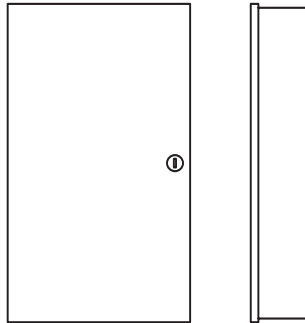


# 1816 RESIDENTIAL TELEPHONE INTERCOM SYSTEM

The model 1816 telephone intercom system is designed for commercial applications where communication and access control devices are necessary to provide two-way voice communication and control of a door or gate through a resident's own telephone – without the need of a dedicated central office phone line. This eliminates the need for costly hard-wired intercom systems, monthly line charges, and equipment lease payments.



**1816 Large Cabinet**  
13.25" W x 35.25" H x 5" D  
336.5mm W x 895mm H x 127mm D



**1816 Small Cabinet**  
13.25" W x 21.25" H x 5" D  
336.5mm W x 540mm H x 127mm D

## 1820 Specs

### Communication

True full duplex  
Hands free or handset depending on lobby panel selected

### Styles

Lobby panels available in surface, recess, and flush mount, and vandal resistant styles

### Capacity

Phone line interface: 1200 max  
Main cabinet (L): 156 max  
Main cabinet (S): 60 max  
Aux cabinets: 192 max (each cabinet)

### Programming Methods

Lobby panel keypad  
Touch-tone telephone

### Advanced Features

Caller ID (Identifies lobby panel and Doorman/Concierge phone)  
Central office phone service is not required to be connected to the system  
Built-in Call Waiting  
Distinctive double ring immediately identifies a guest call  
Programmable directory codes  
10 preprogrammed call out numbers (requires C.O. phone line)  
Doorman phone input  
No reprogramming required when one resident moves out and another moves in  
Power transformer included  
Use any style DKS telephone system as the lobby panel

### Doorman Programmable Features

Do-Not-Disturb feature can be activated/deactivated for each resident  
Call Forwarding number can be programmed for each resident

### Operating Temp

10°F to 145°F  
-12°C to 62°C

### Electrical Requirements

16 VAC, 40 VA System power (350 ma)  
U.L. listed power transformers provided for main cabinet  
16 VAC, 40 VA System power (350 ma)  
U.L. listed power transformers provided for aux cabinet(s)  
Ringer Equivalence 0.0 A  
Jack Type: RJ11C or W

### Safety Standards

FCC (US) DUF6VT-12874-OT-0  
DOC (CAN) 1736 4528 A

### Shipping Weight

Large cabinets approximately 32 lbs (14.5 kg)  
Garden style cabinet 21 lbs (9.5 kg)

### Warranty

2 year limited factory warranty

Distributed by:

### DOORKING, INC.

120 Glasgow Avenue, Inglewood, California 90301 U.S.A. Tel: 310-645-0023 FAX: 310-641-1586 www.doorking.com

© 2006 All Rights Reserved. Product specifications may change without notice. Rev. 4/06

### MEMBER:

