

# 1603 PARKING CONTROL



# BARRIER GATE AUTO SPIKE SYSTEM



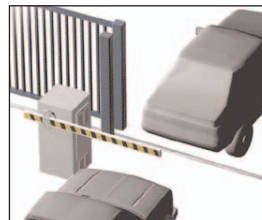
**surface mount**  
spikes install easily without trenching and double as a speed bump. Flush mount (in ground) spikes are available.



**transfer box**  
provides direct mechanical linkage between the barrier operator and spikes



**spikes**  
available in 3 and 6 foot sections



**automatic sequencing**  
when used in conjunction with slide or swing gate operators

## 1603 Barrier Operator

- Designed to link mechanically with the automated spikes
- 1/2 or 1 HP, 115, 230, 480 VAC (DC powered convenience open option available)
- Maintenance free magnetic limits
- Up input memory buffer
- Multiple UP command options
- Ports for plug-in loop detectors
- 2 Convenience outlets
- Automatic sequencing
- 14-Foot aluminum arm

## Automated Spikes Components

- Transfer box mechanically links the 1603 barrier operator to the traffic spikes
- Tunnel sections are available in 2 and 3 foot sections
- Spike sections are available in 3 and 6 foot sections
- End cap provides a smooth end to the spike section
- Optional signal light (red/green) is synchronized with the barrier arm
- Optional warning sign warns drivers to proceed only when spikes are retracted

FEATURES

ACCESS CONTROL SOLUTIONS





The DKS model 1603 Barrier Gate Operator / Automated Spike System is designed as a modular system allowing for easy flexibility in different applications and easy installation. The 1603 operator is designed with many advanced features and mechanically links the spikes to the barrier arm. Spikes are available in surface mount or flush (in ground) mount designs. The 1603 auto-spike system is ideal for parking lots, rental car agencies, schools, car dealerships, government agencies, or in any application where a higher degree of traffic control is preferred.

## 1 Operator

- 15" W x 39.75" H x 15.5" D  
(381mm W x 1010mm H x 394mm D)
- 1/2 or 1 HP, 115, 230, 460 VAC \*
  - Mechanically links operator arm to the transfer box/spike system.
  - \* 230 and 460 VAC units use a step-down transformer to achieve 115 VAC operating voltage.

## 2 Transfer Box

- surface mount  
15" W x 4" H x 15.5" D  
(381mm W x 101.6mm H x 394mm D)
- flush mount  
15" W x 6.5" H x 15.5" D  
(381mm W x 165mm H x 394mm D)
- Transfer box provides a mounting platform for the 1603 operator and links the operator to the spike units.

## 3 Tunnel Section

- surface mount  
31" W x 3" H x 24" or 36" L  
(787mm W x 76.2mm H x 610mm or 914mm L)
- flush mount  
8.5" W x 6.5" H x 24" or 36" L  
(216mm W x 165mm H x 610mm or 914mm L)
- Tunnel sections provide an extended connection from the transfer box to the spike sections.
  - Tunnel sections can be mixed to create the desired length and are used when the 1603 is set back from the curb.

## 4 Spike Section

- surface mount  
31" W x 3" H x 36" or 72" L  
(787mm W x 76.2mm H x 914mm or 1829mm L)
- flush mount  
8.5" W x 6.5" H x 36" or 72" L  
(216mm W x 165mm H x 914mm or 1829mm L)
- Spike sections can be mixed to create the desired length. For example, a 6' and 3' section can be combined for an overall 9' spike section.

## 5 End Cap

- 31" W x 3" H x 12.25" D  
(787mm W 76.2mm H x 311mm D)
- Provides a smooth end to the spike section.

## 6 Barrier Arm

- 14-Foot round (3") aluminum arm painted white with yellow/black visibility tape.
- Due to the operating nature of this spike system, only the aluminum arm is used with the 1603 operator.

## 7 Signal Light (option)

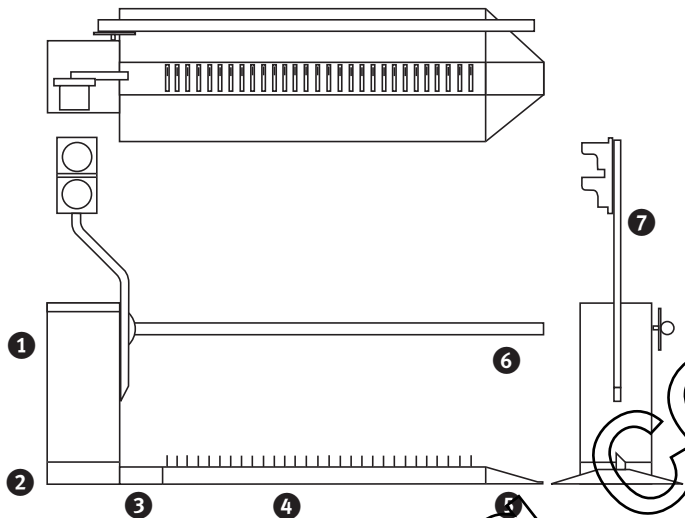
- 9.75" W x 21" H x 14" D  
(247mm W x 533mm H x 355mm D)  
(includes lens shield)
- 115 VAC
  - 8" Red and Green lenses
  - 8000 hour / 67 watt traffic bulbs
  - Mounting bracket for easy attachment to the 1603 operator
  - 1 year limited warranty

The red/green signal light is highly recommended and signals the driver when it is safe (green) to proceed over the spikes.

## Warning Sign (option)

- 24" W x 24" H x 8" D  
(610mm W x 610mm H x 203mm D)
- 115 VAC
  - Two 20 watt fluorescent lamps and one 150 watt flood lamp
  - Light sensor turns sign on at dusk, off at dawn
  - 2 year limited warranty

The warning sign is highly recommended and warns the driver to proceed only when the spikes are retracted.



## 1603 Specs

### Advanced Features

- Electronic limits
- Auto-close timer 1-23 seconds
- Gate Tracker™ reports operator data to a companion DKS access control system
- Auto-sequencing in conjunction with slide or swing transformers
- 115 VAC convenience outlet for accessory transformers
- Ports for plug-in open (up) and reverse (down) loop detectors. DKS plug-in detectors only
- Up input memory buffer
- Down memory option
- Multiple up commands

### Options

DC powered convenience open system that will cause the arm to raise automatically in the event of a power outage

Heater/fan kits for extreme weather conditions

### Operator Mechanical

Worm gear running in a continuous oil bath  
Operator: G90 galvanized steel painted white

### Release Method

Fail-secure mechanical

### Operating Temp

10°F to 115°F  
-12°C to 46°C

### Warranty

5 year limited factory warranty on operator  
1 year limited warranty on transfer box, tunnel sections, spike sections, and end cap

Distributed by:

## DOORKING, INC.

120 Glasgow Avenue, Inglewood, California 90301 U.S.A. Tel: 310-645-0023 FAX: 310-641-1586 www.doorking.com

© 2005 All Rights Reserved. Product specifications may change without notice. Rev. 9/05

## MEMBER:

